



Plumbing Design | Engineering | Construction



California's #1 Multifamily Residential Plumbing Subcontractor







## CALIFORNIA'S #1 MULTI-FAMILY PLUMBING CONTRACTOR

### SERVICES

#### Preconstruction

- Design
- Engineering
- Pre-fabrication
- Packaging & Delivery

#### Construction

- Build and Installation

#### Postconstruction

- 1 Year Service Warranty
- 24/7 Response
- Equipped Service Vans

*For almost four decades, and over \$1 billion of completed work, AMPAM has consistently delivered high quality innovation and technology in the field of complex multi-family plumbing design. Our team of experienced design engineers, project managers, estimators and analysts ensure your project is delivered with state-of-the-art design and attention to detail.*

Throughout all economic conditions, AMPAM has continued to prosper and grow the business while advancing state-of-the-art processes within the ever changing world of California plumbing requirements. Our strength is in our relationships with our valued clients, most of whom are repeat customers who come to us for our design, professionalism and ability to stay on schedule and on budget.

Our mission is to provide you with the greatest possible value by leveraging the latest developments in technology, design, quality and best practices. AMPAM offers sustainable solutions for the future by working with green and solar vendors. We look proactively into the future to anticipate changes in order to be one step ahead in serving your needs. We truly believe in the term Trade Partners.



# AMPAM ADVANTAGE

## STREAMLINED PROCESS

Our design engineers manage the entire process life cycle from initial design through build. This ensures more accurate budgets and requirements, which makes planning and financing more seamless for clients. This helps minimize risk, reduces construction schedules and accelerates building occupancy.

## EFFICIENT INSTALLATION

Quality and efficiency are crucial on all jobs, and we implement a methodical quality control process developed from our 39 years in the field. Since we fabricate and package our own products, everything arrives arranged for quick and easy installations by our experienced foremen and field personnel.

## EMPLOYEE TRAINING PROGRAMS

Training is key and our full-time corporate educator offers an ongoing curriculum with classes in disciplines ranging from leadership to BIM and CAD. This training helps employees develop new skills so they can promote throughout the company, from the fabrication yard to the field, and to design. Our diverse programs help our dynamic work force understand how the pieces fit together for a smoother build for you.

## POST-COMPLETION SUPPORT

As part of our contract, we provide Customer Service for all projects one year after completion. Support staff is available by phone; superintendents, foremen and technicians are available throughout our territories. Fully stocked and equipped Customer Service vans are available 24/7 for immediate quality response to any crisis or emergency.



# AMPAM PROCESS

## AMPAM Design/Build Method



5

## Traditional Method



## DESIGN & ENGINEERING

Our plumbing design engineers manage the entire life cycle from initial design (Design) through construction (Build). The senior plumbing engineer functions as Job Captain and is responsible for all deliverables across the entire project including BIM coordination, ISOs, Cut sheets and BOMs.

These engineering deliverables are completed for all of the Job's waste, storm, vent, water and gas integrated systems.

## FABRICATION

Once a job is designed and engineered, Job production cut sheets are developed from the isometric drawings. Materials are pulled from existing inventory and fabrication begins.

Fabrication takes place in our 40,000 sq. ft. facility located in Carson, CA. The manufacturing lines were custom built with emphasis in Lean Manufacturing to deliver a superior product. ABS/PVC, cast iron, copper, CPVC and black iron pipes are cut and assembled for the Job's waste, storm, water and gas systems.

## PACKAGING & DELIVERY

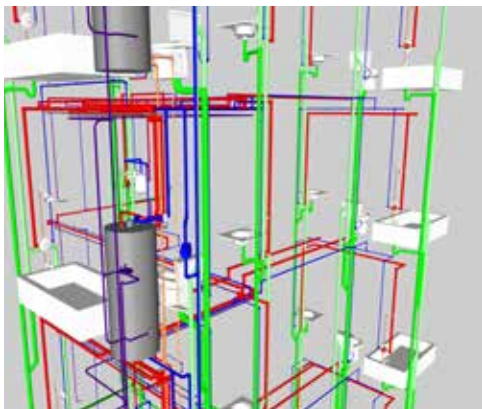
All production assemblies go through a strict quality control process. Materials are then packaged based on each of the job requirements, and delivered to job sites across California—from San Francisco, to San Diego, to Riverside/Inland Empire.

Our logistics fleet includes delivery trucks, Freightliner tracker-trailers, 40-foot trailers with rear-mounted Moffatt forklifts and Pettybone 5-ton forklifts. The fleet is specifically designed to optimize delivery and staging of fabrication pallets.

## BUILD & INSTALLATION

Our superintendents and lead personnel maximize production efforts at the job site to meet the customer's scheduling needs. Our personnel work with the fabricated product and associated isometric drawings to build the job.

This efficient process provides a higher level of quality control and an optimum level of cycle and process time for streamlined installations.



# ABOUT US

6

**90%** of Our Business is Repeat Customers



**\$1 Billion+** Completed Work

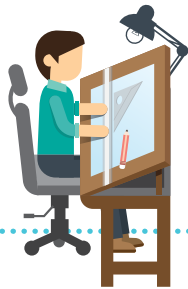


**Years in Business**

Average Project  
**5.5 Stories, 330 Units**



**Total Hours**  
Work Experience



**Design/Engineering Team:**  
**1,000+** Years Experience

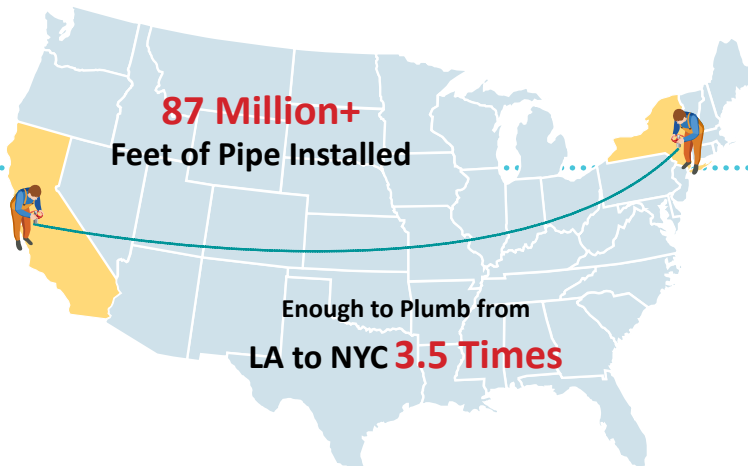
**Construction Team:**  
**8,000+** Years Experience



**1,500 Toilets**  
Installed per Month



**87 Million+**  
Feet of Pipe Installed



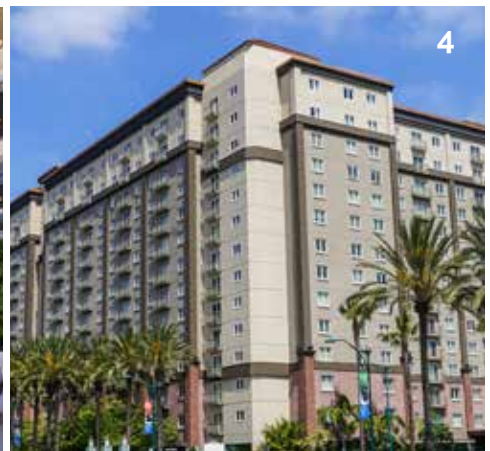
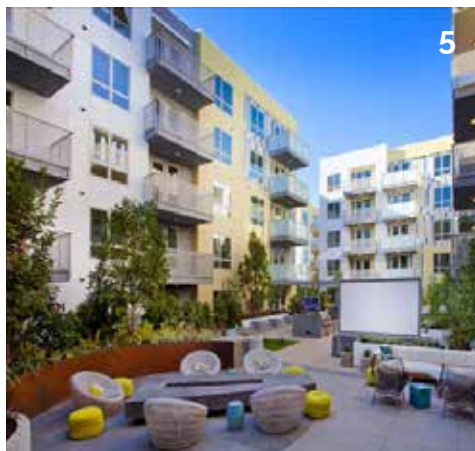
Enough to Plumb from  
LA to NYC **3.5 Times**

# OUR PORTFOLIO

*AMPAM specializes in commercial multi-family residential buildings.*

AMPAM's team of highly experienced engineers has designed and built 100,000+ units throughout California within the last 10 years. We've engineered plumbing systems for all types of structures, including slab on grade, podium, wrap-around and tuck-under. We specialize in TYPE I, III, and V construction. Our portfolio includes apartments, hotels, senior living facilities, student housing and more. We also work extensively on hi-rise and mixed-use commercial/residential developments.

Projects, clockwise: 1) Library Tower Hi-Rise, San Diego 2) Pitzer College Student Housing, Claremont 3) Jia Apartments, Los Angeles 4) WorldMark Hotel, Anaheim 5) The Hesby Apartments, North Hollywood





# COMPANY HISTORY

8

## 1978 to 1996

John and Charles "Buddy" Parks work with their father's company, Parks and Sons Plumbing. They worked as plumbers and foremen, as well as in sales, marketing and field operations.

## 1985

AMPAM moves into an 11,000 sq. ft. facility in Wilmington, CA. The new headquarters houses design, supply, business development, finance and administrative services.

## 1997

John and Buddy co-found Parks Mechanical Construction Corporation. Brother Jason Parks joins and manages its most successful tool - the Design/Build concept.

## 1998

James C. Wright, CPA, joins after being Economic Policy Advisor for the Department of Treasury in the Federated States of Micronesia.

## 1999

Parks Mechanical is acquired by American Plumbing & Mechanical (AMPAM) in a national roll-up, forming a consortium of 12 leading construction (plumbing and mechanical) contractors.

## 2002

AMPAM acquires Parks Prefabrication facility, with its 150,000 sq. ft. work yard and warehouse. Prefab starts in-house with design, isometric drawings and cut sheets, saving both time and money.

## 2005

John and Buddy acquire the AMPAM trademark.

## 2006, 2007 & 2008

AMPAM achieves record financial performances.

## 2007

AMPAM's logistics fleet expands, adding more delivery trucks, trailers with Moffatt forklifts, 5-ton forklifts and Customer Service vans. These vans provide 24/7 support for its 1-year product installation warranties.

## 2014

AMPAM acquires AEC Factory, expanding its leadership role in the growing multi-residential BIM market.

AMPAM is listed as #91 of 100 largest contractors in the U.S. by Contractor Magazine.

## 2015

AMPAM is listed as #48 of 100 largest contractors in the U.S. by Contractor Magazine.

AMPAM acquires and renovates a 50,000 sq. ft. building and prefab warehouse in Carson, CA. The new headquarters houses 150+ employees.



## 2016

AMPAM is listed as #43 of 100 largest contractors in the U.S. by Contractor Magazine.

AMPAM surpasses \$1 billion in revenue.

## 2017

AMPAM is ranked #7 among top plumbers in the U.S. by Contractor Magazine.





# OUR PARTNERS

## General Contractors

Balfour Beatty  
Benchmark Contractors, Inc.  
Bernards  
Crane Development Corp.  
C.W. Driver  
Johnstone Moyer  
Reylenn Construction  
Suffolk  
T.B. Penick & Sons  
The Hill Companies  
W.E. O'Neil  
Western National Group  
Zwick

## Architects

Architects Orange  
Bassenian Lagoni  
KTTY  
MVE + Partners  
TCA Architects  
Togawa Smith Martin

## Owners

Carmel Partners  
CIM Group  
Greystar  
Holland Residential  
Irvine Company  
Lewis Group of Companies  
Lyon Living  
Sares Regis  
SL Residential

## Owners/Builders

Advent Companies  
Alliance Residential  
Avalon Bay Communities  
Fairfield Residential  
Greystone Multi-Family Builders  
Trammell Crow Residential



## Los Angeles Office

Phone: (310) 835-1532  
Fax: (310) 835-2913  
17036 Avalon Blvd.  
Carson, CA 90746



## San Jose Office

Phone: (310) 835-1532  
Fax: (310) 835-2913  
1277 N. 15th St.  
San Jose, CA 95112